

# TEAC®

## Service Manual

---

# CTM3425TXT

## 34cm Colour Television

---

## SPECIFICATION

SUPPLY VOLTAGE : AC220V 50Hz  $\geq +10\%$  /  $-20\%$

SYSTEM :	PAL - I / I	PAL - BG	PAL - I (UK)	PAL - SECAM - BG / DK	PAL - SECAM - BG / DK (HYPER)	PAL - BG (HYPER)	PAL - BG (CATV)	SECAM - L	L'	
CHANNEL L - VHF : H - VHF : UHF :	4 - 13 21 - 69	2 - 4 5 - 12 21 - 69	21 - 69	1 - 5 6 - 12 21 - 69	1 - 5 6 - 12 21 - 69	E2 - S10 E5 - S41 E21 - E69	E2 - S2 E5 - S20 E21 - E69	1 - Q 21 - 69	FB - FC	CH CH CH
VIF FREQUENCY :	38.9	38.9	39.5	38	38.9	38.9	38.9	38.9	32.7	MHz
SIF FREQUENCY :	32.9	33.4	33.5	31.5 32	32.4 33.4	33.4	33.4	32.4	39.2	MHz
CHROMA IF FREQUENCY :	34.47	34.47	35.07	33.57 33.57	34.47 34.47	34.47	34.47	34.47		MHz
INTER-CARRIER FREQUENCY :	6.0	5.5	6	6.5 6	6.5 5.5	5.5	5.5	6.5	6.5	MHz
SCANNING HORIZONTAL : VERTICAL :	15625 LINE 50 Hz									
ANTENNA INPUT IMPEDANCE :	75 OHM									
CRT :	14"									

ITEMS OF MEASUREMENT	STANDARD	UNIT
VIDEO SENS. AT S/N 30db L - VHF	$\leq 57$	dbuv
H - VHF	$\leq 57$	dbuv
UHF	$\leq 60$	dbuv
SOUND SENS. AT S/N 30db L - VHF	$\leq 42$	dbuv
H - VHF	$\leq 42$	dbuv
UHF	$\leq 48$	dbuv
AGC CHARACTER	$\geq 60$	db
SELECTIVITY -1.5 MHz	$\geq 35$	db
+ 8 MHz	$\geq 40$	db
COLOR SENS.	$\leq 45$	dbuv
COLOR LOCK - IN RANGE	$\geq \pm 300$	Hz
VERTICAL LOCK - IN RANGE	$\geq 6$	Hz
HORIZONTAL LOCK - IN RANGE	$\geq 400$	Hz
MAX BRIGHTNESS	$\geq 140$	cd/m <sup>2</sup>
MAX OUTPUT POWER MONO	$\geq 1.3$	W
STEREO	$\geq 1.5$	
OUTPUT POWER AT 10% THD MONO	$\geq 1$	W
STEREO	$\geq 1.2$	
BUZZ	$\leq -40$	db
AFC RANGE	$\geq +1$	MHz
	$\geq -0.5$	MHz
MIN. VOL HUM	$\leq 20$	mV
RESOLUTION HORIZONTAL	$\geq 300$	LINES
VERTICAL	$\geq 400$	LINES
LINEARITY DISTORTION VERTICAL	$\leq 10$	%
HORIZONTAL	$\leq 10$	%
RASTER DISTORTION	$\leq 5$	%
REMOTE CONTROL DISTANCE	$\geq 5$	METER
ANGLE	$\geq \pm 15$	DEGREE
POWER CONSUMPTION (AT NORMAL CONDITION)	$\leq 60$	WATTS
POWER CONSUMPTION (AT MAX. CONDITION)	$\leq 70$	WATTS
CONVERGENCE DISLOCATION AT AREA "A"	$\leq 0.4$	%
AREA "B"	$\leq 0.8$	%
( see fig.1 )		

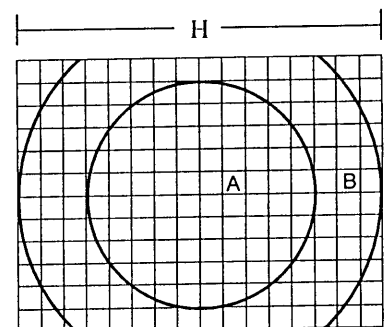


Fig.1

VIDEO INPUT LEVEL : 1.0V P-P  $\pm$  3dB  
 AUDIO INPUT LEVEL : 0.5V RMS  $\pm$  3dB

# ALIGNMENT INSTRUCTION

## I. PLEASE READ BEFORE ATTEMPTING SERVICE

1. Never disconnect any leads while receiver is in operation.
2. Disconnect all power before attempting any repairs.
3. Do not short any portion of the circuit while power is on.
4. For safety reasons, all parts replaced should be identical, (for parts and part numbers see parts list).
5. Before alignment the set must be pre-heated for 30 minutes or more and erase magnetism thoroughly from CRT front chassis frame by erase coil.
6. An isolation transformer should be used during any dynamic service to avoid possible shock hazard.

## II. TEST EQUIPMENT

- |   |   |
|---|---|
| 1. VIF Sweep Generator                  | 7. Volt Ohmmeter                        |
| 2. SIF Sweep Generator                  | 8. High Voltage Meter                   |
| 3. Colour Bar Dot Cross Hatch Generator | 9. Ampere Meter (0.5 Class, DC 3mA Max) |
| 4. DC Power Supply                      | 10. Demagnetizing Coil                  |
| 5. Oscilloscope                         | 11. Philips Pattern Generator           |
| 6. Vacuum Tube Voltmeter                | 12. High Pot Tester                     |

## III. VIF ALIGNMENT

### A. Preparation step. (see fig.1a)

1. Connect Sweep Generator to tuner test point and Ground.
2. Connect  $14V \pm 1V$  Bias Voltage to C406 (+) and Ground.
3. Connect A.G.C. Bias Voltage to PIN 48 of U201 \*A.G.C. Bias Voltage can't over 5V. (see fig.1b)
4. Disconnect the soldering pads 'H' and 'I'.
5. Connect  $14V \pm 1V$  Bias Voltage to C514 (+).

### B. TANK COIL ALIGNMENT

1. Calibrate the division of Sweep Generator equal to 100mV per div.
2. Adjust the output of Sweep Generator to -40dB.  $\pm 20dB$ .
3. Connect the waveform detector to TP201 and Ground.
4. Adjust A.G.C. Bias Voltage to achieve 1V p-p  $\pm 10\%$  output on oscilloscope.
5. Adjust L204 to obtain P.C. (38.9 MHz) at the lowest point (fig.2)  $\pm 0.5$  DIV.

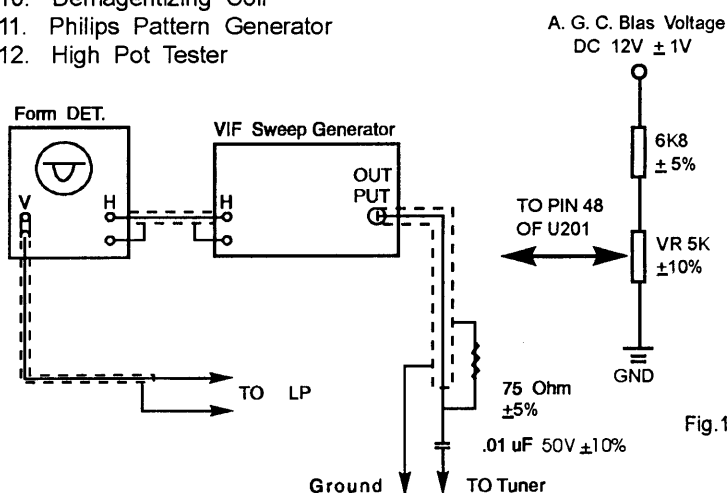


Fig.1b

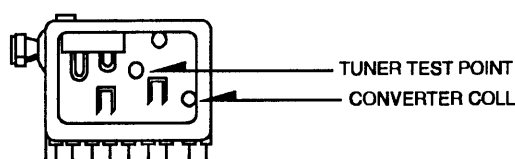


Fig. 1

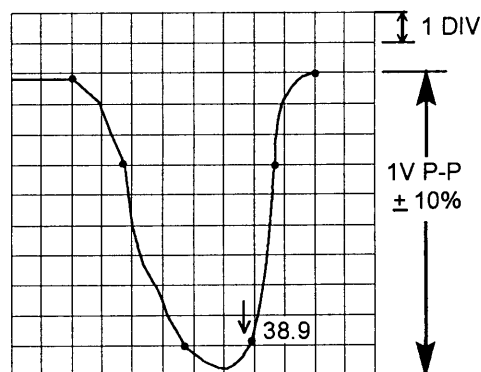


Fig. 2

SYSTEM:	B/G	DK HYPER BAND	I/I	D/K	I(UK)
P.C. (MHz)		38.9 MHz		38.0 MHz	39.5 MHz

REMARK: ALL FREQUENCY OF MARKER POINTS ARE  $\pm 0.2\%$  TOLERANCE.

### C. V.I.F. ALIGNMENT

1. Connect 100ohm  $\pm$  5% Res. parallel to R266
- 1a. (If the model is SECAM - L). Connect 100ohm  $\pm$  5% Res. between Pin 10 of U201 and Q206 'B'
2. The output of Sweep Generator should be -40dB  $\pm$  20dB
3. Adjust A. G. C. Bias to maintain the waveform achieve 1V p-p  $\pm$  10% (about 4V)
4. Adjust tuner converter coil to obtain waveform as Fig.3 (Point (C. C.) and point (P. C.) can have  $\pm$  0.5div tolerance)
5. If the tuner haven't converter coil V. I. F alignment may be omitted

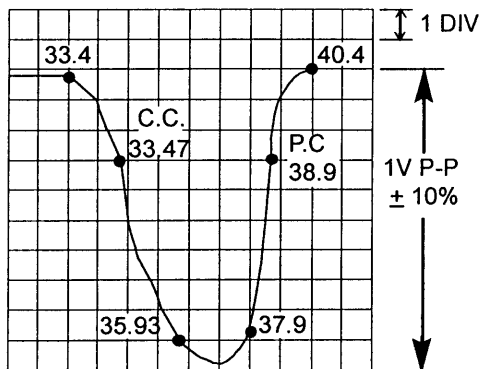


Fig.3

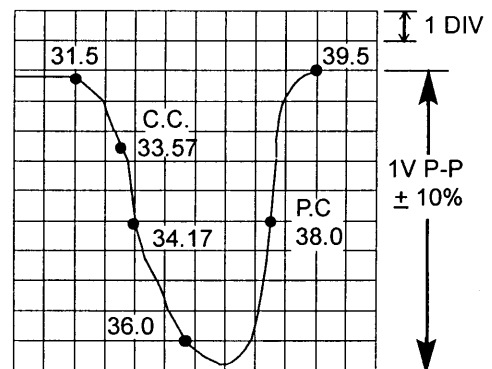


Fig.3

SYSTEM : PAL - BG / L - L'  
 PAL - BG / L  
 PAL - BG / DK  
 ( W / HYPER BAND )  
 PAL - BG

SYSTEM : PAL - BG / DK  
 ( W / O HYPER BAND )

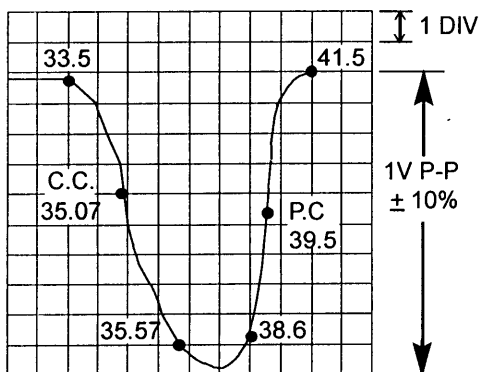


Fig.3

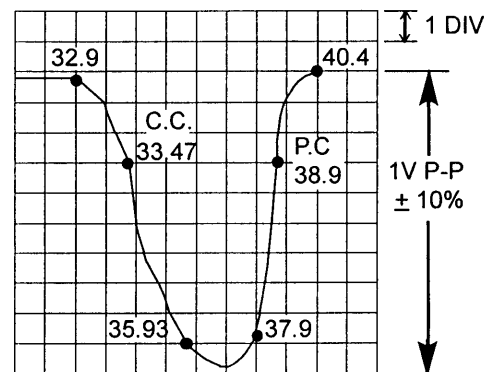


Fig.3

SYSTEM : PAL - I ( UK )

SYSTEM : PAL - I / I

#### D. FINE AFC ALIGNMENT

1. Apply Pal I. F. signal (38.9 MHz) modulated with a colour bar pattern to tuner I. F. point.
2. The output of I. F. signal should be 80 dB.  $\pm 3$  dB.
3. Connect a digital voltmeter to TP203 and Ground.
4. Adjust L204 to obtain a reading of  $3.75V \pm 0.25V$ .
5. Soldering the pads 'H' and 'I'.

SYSTEM	BG/DK	BG/DK W/H.BAND	PAL-I	PAL-BG PAL-I/I PAL-BG/L
IF SIGNAL (MHz)	38.0	38.9	39.5	38.9

#### IV. B+ ADJUSTMENT

- 1) Connect a digital voltmeter to TPB+ and ground.
- 2) Set Brightness, Contrast and colour to minimum.
- 3) Adjust VR101 (Sub-brightness) to centre and FBT volume just be seen.
- 4) Adjust VR501 and obtain a reading of  $111V \pm 1V$ . (FOR CAIHONG CRT)

#### V. AGC ALIGNMENT

- 1) Receive monoscope pattern at CH 69 UHF. (Tuner input field strength table show as below)
- 2) Connect a digital meter between the Tuner AGC terminal and ground.
- 3) Adjust the AGC variable resistor (VR201) to the MAXIMUM position (clockwise), and then adjust the VR anti-clockwise until the voltage drop down  $\geq 0.4V$ .

TUNER MODEL NO.	RF INPUT SIGNAL(dB)	TUNER MODEL NO.	RF INPUT SIGNAL(dB)
ENV598B7F2	62 $\pm$ 2dB	OSCAR 2900KKC	60 $\pm$ 2dB
UVC6201-RC	57 $\pm$ 2dB	HBC3300KHC	60 $\pm$ 2dB
UVC8303-RW	57 $\pm$ 2dB	TBD1CAB14	60 $\pm$ 2dB
UVL1812-AW	57 $\pm$ 2dB	TECC1986VA0618	60 $\pm$ 2dB
UVC1401-EW	57 $\pm$ 2dB	TBD1-HYPV15A	60 $\pm$ 2dB
TBQ-5-32	57 $\pm$ 2dB	UVE33-W24/R16-8649	60 $\pm$ 2dB
TBQ 8-12	57 $\pm$ 2dB	UVE50-AW04D	60 $\pm$ 2dB
VISHZUZ51	60 $\pm$ 2dB		

Remark : a/. the voltage drop down must be close 0.4V  
b/. no noise on the picture

#### VI. FOCUS ALIGNMENT

- 1) Set the brightness and contrast to middle position.
- 2) Receive Monoscope pattern input signal 70dB  $\pm$  10dB.
- 3) Adjust focus control to obtain sharpest picture.

#### VII. HORIZONTAL CIRCUIT ADJUSTMENT

- 1) Receive Monoscope Pattern input signal 70dB  $\pm$  10dB.
- 2) Adjust VR202 to obtain the picture at center.  
(Specification show in FIG. 5)

#### VIII. VERTICAL CIRCUIT ADJUSTMENT

- 1) Receive the Monoscope Pattern input signal 70dB  $\pm$  10dB.
- 2) Adjust VR402 to obtain a normal picture.

#### IX. CUT-OFF VOLTAGE ALIGNMENT

- 1) Receive PHILIPS Pattern input signal 70dB  $\pm$  10dB.
- 2) Turn the contrast, brightness and colour to the minimum value.
- 3) Turn VR601, 602, 603, 604, and 605 to the middle position.
- 4) Adjust the middle point of Sub-brightness variable resistor (VR101) to  $1.5V \pm 0.1V$ .
- 5) Adjust the screen volume on FBT can just be seen.

DISTRICT	CENTRE (mm) POSITION	LIMIT (mm)	SCANNING SIZE (%)	SCANNING SIZE LIMIT (%)
THAILAND	-1	0 ~ -2	90	88 ~ 92
FRANCE	+3	0 ~ +5	90	88 ~ 94
GERMANY	+3	0 ~ +5	90	90 ~ 95
*GROUP A	-2	-5 ~ -1	90	88 ~ 94
*GROUP B	0	-2 ~ +2	90	88 ~ 94
*GROUP C	+3	0 ~ +5	90	88 ~ 94

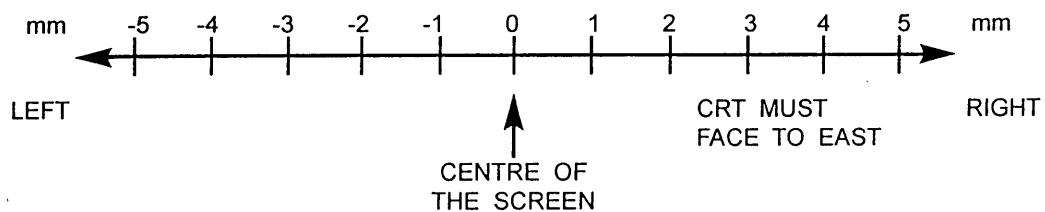


FIG. 5

- REMARK :
1. SUITABLE FOR 14" OR ABOVE TV.
  2. Adjust the centre position must take the upper side of monoscope pattern for standard.
  3. Group A : AUSTRALIA, NEW ZEALAND, TAHITI.
  4. Group B : HONG KONG, CHINA, AMERICA, CANADA, MALAYSIA, MEXICO.
  5. Group C : ENGLAND, ITALY, GERMANY, RUSSIA, SWITZERLAND, JUGOSLAVIA, SPANISH.
- If the above countries are not include, please consult to Engineering Dept.

#### VI - a. SIF ALIGNMENT ( FOR NICAM & G. STEREO )

1. Connect the sweep generator to U701 Pin 15.
2. Connect waveform detect to PIN1 and PIN3 at CN704.
3. Connect A.G.C. Bias voltage to U701 Pin 2.
4. The output of sweep generator should be -30dB  $\pm$ 5dB.
5. Adjust T702 and T701 to obtain the waveform as Fig.

Remark : All frequency of marker can have  $\pm$ 0.2% tolerance.

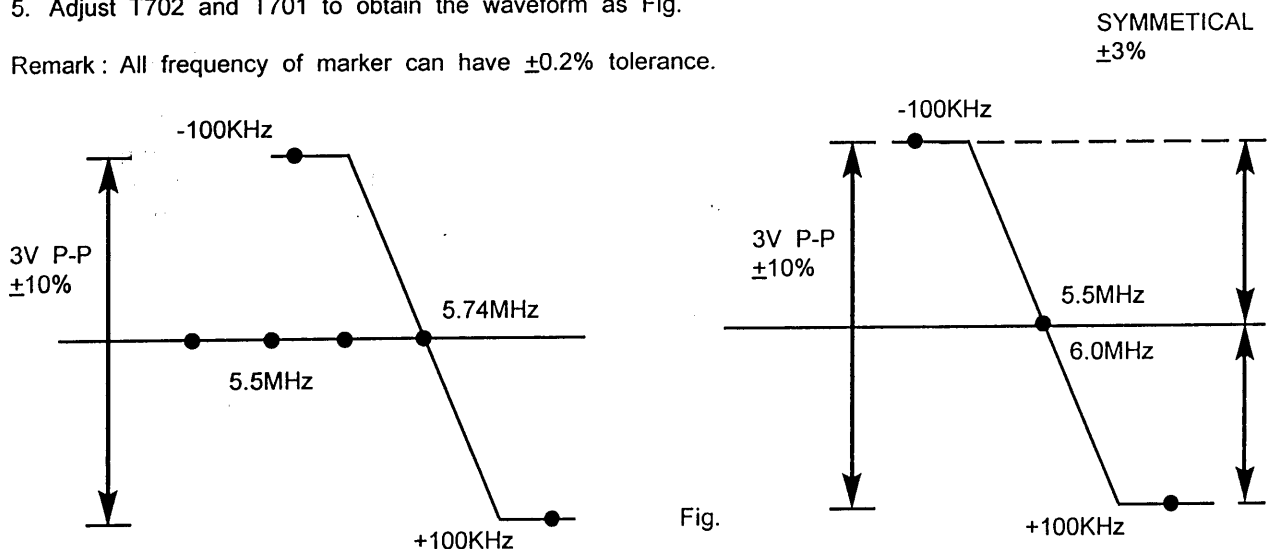


Fig.

#### VII - b. SOUND TANK COIL ALIGNMENT ( FOR NICAM & G. STEREO )

1. Connect Philips Pattern Generator to tuner test point and Ground. (Frequency is (39.5) 38.9MHz color bar input signal is 80dB  $\pm$ 3dB)
2. Connect Digital multimeter to PIN12 at U701.
3. Adjust T703 to obtain a DC 2.8V  $\pm$ 0.1V.

**X. WHITE BALANCE ALIGNMENT STEP**

- 1) Degauss the picture by degaussing coil if necessary.
- 2) Receive a black and white pattern input signal  $70\text{dB} \pm 10\text{dB}$  or video input  $1\text{V p-p} \pm 3\text{db}$ .
- 3) Adjust VR601, 602, 603, 604, 605 to obtain uniformly white picture  $9300^\circ\text{K} \pm 3\text{JND}$ .

**XI. SUB-BRIGHTNESS ALIGNMENT**

- 1) Receive a PHILIPS bar pattern input signal  $70\text{dB} \pm 10\text{dB}$ .
- 2) Turn the brightness, contrast and colour to minimum.
- 3) Adjust VR101 until the brightest bar can just be seen.

**XII. CONVERGENCE ADJUSTMENT ( IF NECESSARY ) ( SEE FIG.5 )**

- 1) Receive a dotted pattern input signal  $70\text{dB} \pm 10\text{dB}$ .
- 2) Unfix the convergence magnet clamber and align red with blue dots at the center of the screen by rotating ( R,B ) static convergence magnets.
- 3) Align Red / Blue with green dots at the center of the screen by rotating ( RB-G ) static convergence magnet.
- 4) Fix the convergence magnets by turning the clamber.
- 5) Remove the DY wedges and slightly tilt the deflection yoke horizontally and vertically to obtain the good overall convergence.
- 6) Fix the deflection yoke by wedges.
- 7) If purity error is found, follow "PURITY ADJUSTMENT" INSTRUCTIONS.

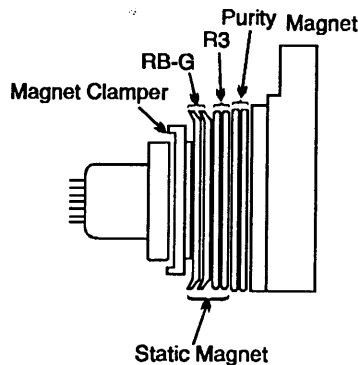


Fig. 5

**XIII. HIGH POT TESTING**

- 1) Short the LINE CORD L-pole and N-pole.
- 2) Switch on the power switch of the TV set.
- 3) The High Pot Tester (-) connect to the L and N pole and (+) connect to the metal parts of cabinet.

REMARK: The High Pot Tester can have  $\leq \pm 3\%$  tolerance.

CONDITION / SAFETY STD.	TEST SYANDARD	TEST STANDARN FOR PRODUCTION
VDE, SAA	3.0KV 10mA / 1MIN	$\geq 3.5\text{KV} \leq 10\text{mA} / \geq 10 \text{ SEC.}$
BS	4.0KV 10mA / 1MIN	$\geq 4.0\text{KV} \leq 10\text{mA} / \geq 10 \text{ SEC.}$
CHINA STANDARD	3.0KV 10mA / 1MIN	$\geq 3.3\text{KV} \leq 5\text{mA} / \geq 6 \text{ SEC.}$

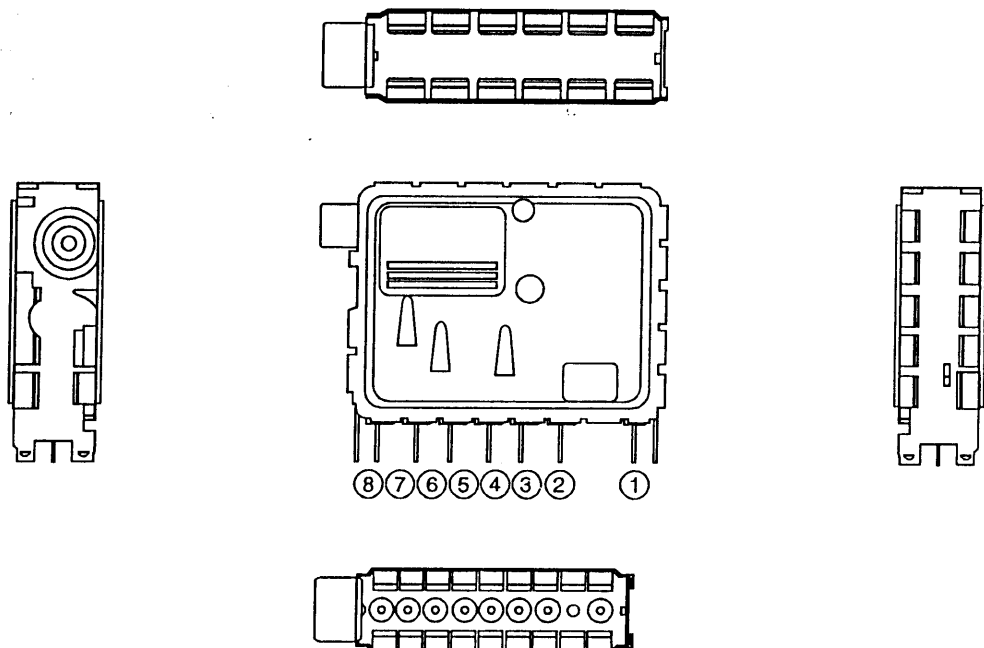


# TRANSISTOR AND IC IDENTIFY

		FOR SECAM			FOR TELETEXT				
	TDA8362 TDA8361K		HCF4053BF TDA4665		PH2369 2N5551 BF370 BC557B BC547B 2N5401 BC548B ED1402C 2N5551 BC558B ED1602		TDA8395 TDA3843		SAA5254 P/H SAA5254 P/T
	CTV222S CTV222 PRC-1 CTV322S CTV350G W-2		BU2508DF 2SD1545		2SC2482 BF422		SAA 7282ZP		PC74HCT 241P TDA 3857 TDA 8425 TDA 8416 TDA 8732
	ST24C01B1 ST24C0AB1		LM7805 LM7808 LM7812		BD135				
			TDA3653B TDA1013B		BUT 1				

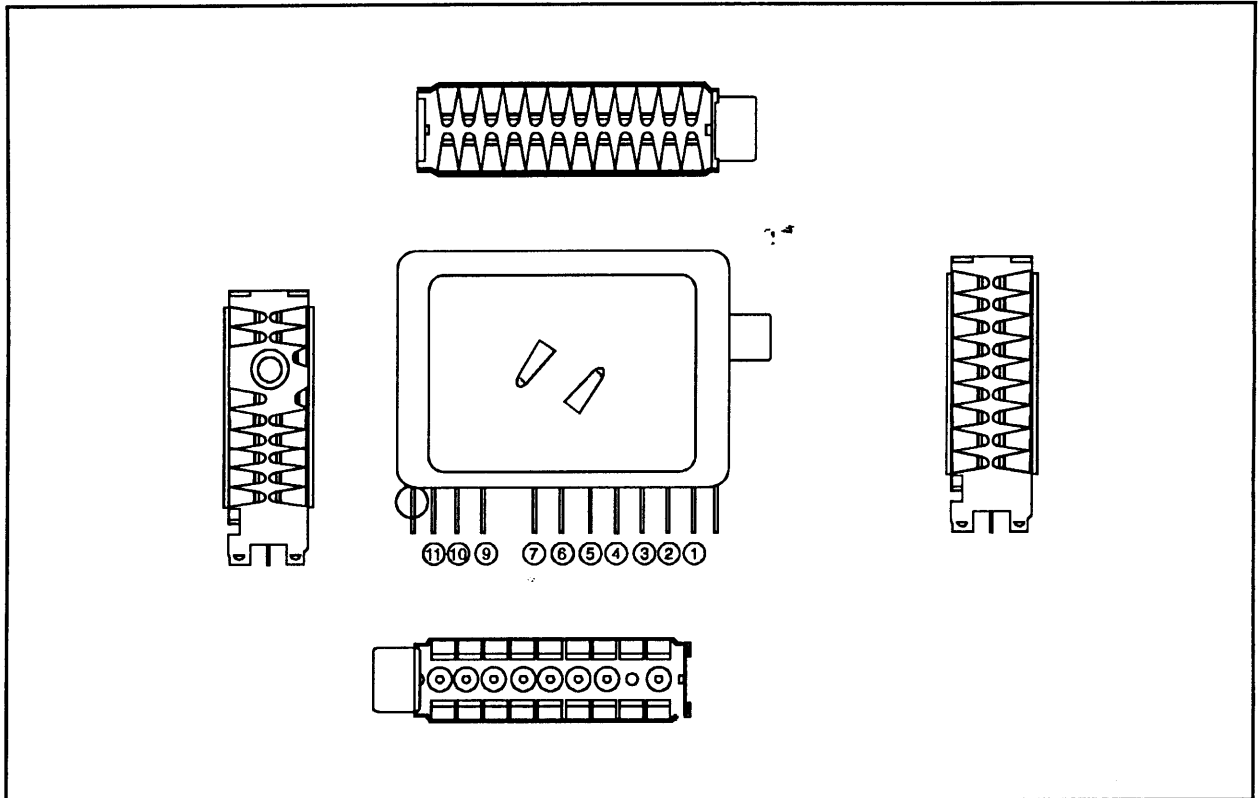
## PICTORIAL VIEW OF TUNER

TERMINAL NO.	1	2	3	4	5	6	7	8
TERMINAL NAME	IF	B+	AFT	LB	AGC	HB	VT	UB



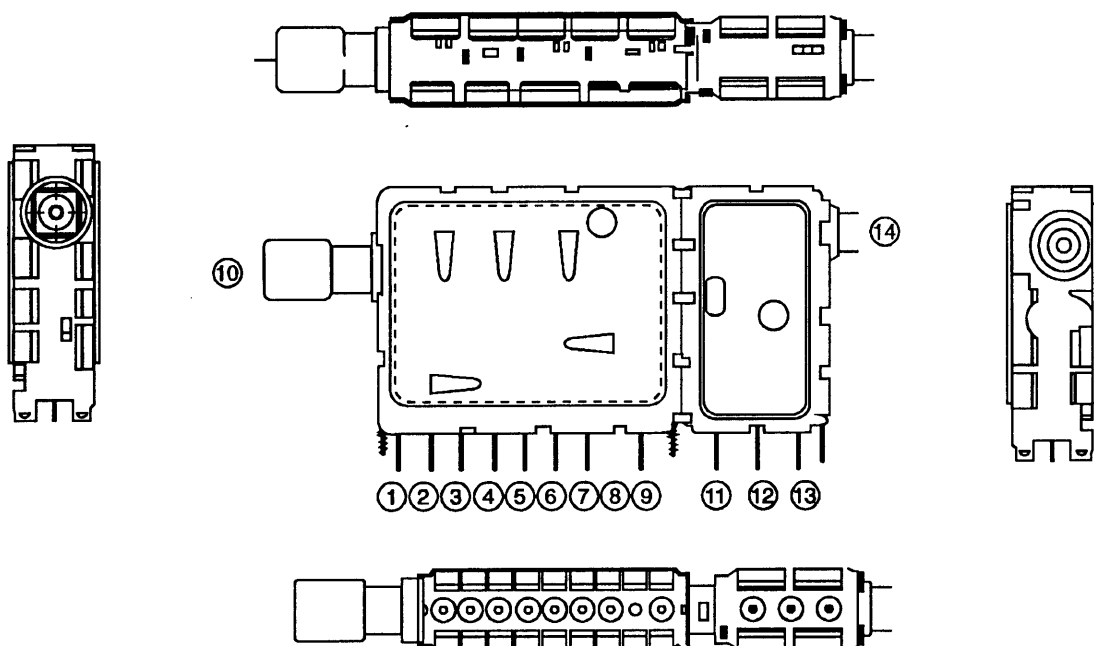
**PICTORIAL VIEW OF TUNER ( WSP TUNER )**

TERMINAL NO.	1	2	3	4	5	6	7	8	9	10	11
TERMINAL NAME	AGC	VT	BU	BH	BL	B+5V	-	-	-	IF GND	IF



**PICTORIAL VIEW OF TUNER ( Only For L' )**

TERMINAL NO.	1	2	3	4	5	6	7	8	9	10	11	12	13	14
TERMINAL NAME	BU	VT	BH	AGC	BL	AFT	B	EMPTY	IF OUT	U/V IN	IF 1	L1	B+	IF2



VOLTAGE TABLE FOR IC ( ONLY FOR REFERENCES )						
PIN NO.	SYMBOL	U 201	U 101	U 202	U 203	
		TDA 8362	CTV 322	TDA 4661	TDA 8395	
1		3	4.4	5.2	4.4	
2		5.8	0.9	0.2	1.3	
3		5.8	4.9	GND	7.9	
4		5.4	4.9	GND	0	
5		8.0	4.9	1.0	0	
6		3.8	2.5	0	0	
7		3.4	0	0.4	3.3	
8		1.7	4.5	GND	4.2	
9		GND	2.9	5.2	3	
10		7.8	5	0	3	
11		GND	GND	3.2	0	
12		3.3	5.6	3.2	0	
13		4.5	5	0	0	
14		4.0	5	1.4	0	
15		3.4	5	0	1.2	
16		0.1	5	1.4	0.6	
17		4.8	5			
18		2.4	0.1			
19		2.4	5			
20		2.4	5			
21		0.4	GND			
22		3.3	0			
23		3.3	0			
24		3.3	0			
25		1.2	0			
26		2.7	0.3			
27		5.5	-0.3			
28		3.8	5			
29		3.8	5			
30		1.5	GND			
31		1.6	2.4			
32		4.6	2.0			
33		5.1	5			
34		1.4	5.4			
35		2	4.8			
36		7.6	0			
37		0.5	0			
38		0.8	0			
39		2.8	3.2			
40		3.7	2.6			
41		2.3	0			
42		2.8	5			
43		4.3				
44		4.0				
45		4.0				
46		4.0				
47		4.1				
48		4.5				
49		1.2				
50		3.6	1	12	9.7	13.7
51		4.8	2	GND	GND	GND
52		6.5	3	8	5	12

SYMBOL	U 401	U102	U 705
PIN NO.			
1	1.1	0	GND
2	GND	5	7.7
3	1.3	0	16
4	GND	0	15.6
5	12.7	2.6	1.2
6	24.5	3.2	6.7
7	0.4	5	2.4
8	3.9	5	2.8
9	24.1		GND

SYMBOL	U 405	U501	U402
PIN NO.			
1	12	9.7	13.7
2	GND	GND	GND
3	8	5	12

NOTE : VOLTAGE ARE TAKEN UNDER TUNED CONDITION WITH

CONTRAST : Maximum Position  
 BRIGHTNESS : Maximum Position  
 COLOR : Maximum Position  
 SIGNAL INPUT : 70dBuV ± 10dB  
 CHANNEL SETTING : The Last Channel of UHF High  
 SIGNAL PATTERN : Colour Bar

VOLTAGE TABLE FOR TRANSISTOR ( ONLY FOR REFERENCE )								
LOCATION \ TR	B (V)	C (V)	E (V)	SYMBOL	B (V)	C (V)	E (V)	
Q101	0.6	1.2	0	Q402	-0.1	112.5	0	
Q102	0	0	0	Q501	9.1	12.8	8.4	
Q103	0	4.6	0	Q502	5.4	0	1.7	
Q104	0	11.9	0	Q503	0	1.2	0	
Q105	0.6	0	0	Q504	-2.6	293	0.07	
Q106	12	0	12	Q505	0.6	0.06	0	
Q107	12	0	12	Q506	113.1	113.7	113.8	
Q108	11.1	11.7	12	Q507	113.7	113.8	113	
Q201	2.3	11.7	1.6	Q601	2.6	129.2	2.1	
Q202	1.4	4.8	0.8	Q602	2.5	128.3	1.9	
				Q603	2.5	128.4	1.9	
Q204	3.1	7.3	2.4	Q604	3.7	0	3.9	
Q205	2.3	7.7	1.7	Q605	0	175	0	
				Q606	-0.2	11.3	0	
Q207	0	6.3	0	Q701	16.7	16.1	16.1	
Q208	3.6	7.9	2.9	Q702	2	5	1.3	
Q209	0	6.3	0	Q705	0.2	8.1	0	
Q210	0.7	0	0	Q706	0	8.1	0	
Q211	4.8	12	4.1					
Q401	0.5	0	0					

NOTE : VOLTAGE ARE TAKEN UNDER TUNED CONDITION WITH

CONTRAST : Maximum Position  
 BRIGHNESS : Maximum Position  
 COLOR : Maximum Position  
 SIGNAL INPUT : 70dB $\mu$ v  $\pm$  10dB  
 CHANNEL SETTING : The Last Channel of UHF High  
 SIGNAL PATTERN : Colour Bar

VOLTAGE TABLE FOR TRANSISTOR ( ONLY FOR REFERENCE )				VOLTAGE TABLE FOR IC		
SYMBOL	B (V)	C (V)	E (V)	SYMBOL PIN NO.	U 901 SAA5254P / T SAA5254P / H	U 902 PC74HC T241P
Q101	0.6	1.2	0	1	5	0
Q102	0	0	0	2	2.1	0
Q103	0	4.6	0	3	3.5	0
Q104	0	11.9	0	4	0	0
Q105	0.6	0	0	5	0	0
Q106	12	0	12	6	5	0
Q107	12	0	12	7	2	0
Q108	11.1	11.7	12	8	2.2	0
Q201	2.3	11.7	1.6	9	2.5	0
Q202	1.4	4.8	0.8	10	5	0
Q204	3.1	7.3	2.4	11	5	0
Q205	2.3	7.7	1.7	12	1.8	0
Q207	0	6.3	0	13	5	0
Q208	3.6	7.9	2.9	14	0	0
Q209	0	6.3	0	15	0	0
Q210	0.7	0	0	16	0	0
Q211	4.8	12	4.1	17	0	0
Q401	0.5	0	0	18	4.1	0
Q402	-0.1	112.5	0	19	0	0
Q501	9.1	12.8	8.4	20	0	5
Q502	5.4	0	1.7	21	0.7	
Q503	0	1.2	0	22	0	
Q504	-2.6	293	0.7	23	0	
Q505	0.6	0.06	0	24	3	
Q506	113.1	113.7	113.8	25	2.6	
Q507	113.7	113.8	113	26	0.7	
Q601	2.6	129.2	2.1	27	0.7	
Q602	2.5	128.3	1.9	28	0.8	
Q603	2.5	128.4	1.9	29	0	
Q604	3.7	0	3.9	30	0	
Q605	0	175	0	31	0.8	
Q606	-0.2	11.3	0	32	0.7	
Q701	16.7	16.1	16.1	33	0.7	
Q702	2	5	1.3	34	0.8	
Q705	0.2	8.1	0	35	0.7	
Q706	0	8.1	0	36	0.8	
Q901	0.3	6	0	37	0.7	
				38	0.8	
				39	0.8	
				40	0.7	

W/TEXT

NOTE : VOLTAGE ARE TAKEN UNDER TUNED CONDITION WITH

CONTRAST : Maximum Position  
 BRIGHNESS : Maximum Position  
 COLOR : Maximum Position  
 SIGNAL INPUT : 70dB $\mu$ v  $\pm$  10dB  
 CHANNEL SETTING : The Last Channel of UHF High  
 SIGNAL PATTERN : Colour Bar

**MODEL NO.: CT-M3425TXT Chassis type GT-613B**  
**SYSTEM: PAL BG PLAYBACK AV IN / OUT CABLE TUNER**

Part Number	Description	Unit	Qty
10780045546	455K HZ RESONATOR "KYOCERA"	PC	1
11310100517	CARBON FILM RESISTOR 100 OHM 1/16W +-5%	PC	2
11310200517	CARBON FILM RESISTOR 1K OHM 1/16W +-5%	PC	1
11310300517	CARBON FILM RESISTOR 10K OHM 1/16W +-5%	PC	1
11310900517	CARBON FILM RESISTOR 1 OHM 1/16W +-5%	PC	1
11347300517	CARBON FILM RESISTOR 47K OHM 1/16W +-5%	PC	1
11368200517	CARBON FILM RESISTOR 6.8K OHM 1/16W +-5%	PC	1
12747604203	ELECT. CAP. 47 MFD 16V +-20%	PC	1
13060010100	INFRARED EMITTER EL-1L1 KODENSHI	PC	1
13121071929	TRANSISTOR 2SA719R/S MATSUSHITA	PC	1
13123094500	TRANSISTOR 2SC945 NEC	PC	1
13380301033	I.C. SAA3010T PHILIPS	PC	1
17272600099	BARE WIRE 54MM	M	0.1
190R63301P2	REMOTE P.C.B. (050896)	PC	1
51626040810	SELF-TAPPING SCREW 2.6 X 8 P/T (HARDEN)	PC	2
774R6330100	BATTERY SPRING (+VE)	PC	1
774R6330200	BATTERY SPRING (-VE)	PC	1
774R6330300	BATTERY SPRING (+-VE)	PC	1
81004110413	POLYBAG 4" X 11" X 0.04MM W/RE-CYCLING MARK	PC	1
849R6330100	KEY PAD {FULL 40 KEYS}	PC	1
892R6330308	DIAL KEY PLATE - ENG STD W/TXT ,W/O SYS (613 MODEL) (TEAC)	PC	1
900R6330203	HANDSET TOP CABINET -MATT BLK. SPRAYED W/SILVER 8001C S.S.	PC	1
902R6330203	HANDSET BOTTOM CABINET - MATT BLACK SPRAYED	PC	1
910R6330168	HANDSET BATTERY DOOR - TEAC DESIGN {CT-M3425TXT} {RC-692}	PC	1
973R6330100	VOLUME/CHANNEL KNOB - MOULDED BLACK	PC	1
51430041000	SELF-TAPPING SCREW 3 X 10 B/T (HARDEN) {BLACK}	PC	6
51440031210	SELF-TAPPING SCREW 4 X 12 B/A (HARDEN)	PC	1
51440042510	SELF-TAPPING SCREW 4 X 25 B/T (HARDEN)	PC	6
51450043510	SELF-TAPPING SCREW B/T 5 X 35 HEAD DIA. =8.5MM (MAX)(HARDEN)	PC	4
51530341010	SELF-TAPPING SCREW 3 X 10 W/B/T (HARDEN)	PC	9
63017301600	FIBRE WASHER OD=17 ID=3 T=1.6	PC	1
63023801000	FIBRE WASHER OD=23 , ID=8 T=1MM	PC	4
75006310201	35MM SOLDERING LUG OD:7 ID:3.2 LEG:4X35MM	PC	2
77789200100	SPRING IN 17.0 X L22	PC	1
800613B0100	POLYFOAM (1)	PC	1
800613B0200	POLYFOAM (2)	PC	1
800613B0300	POLYFOAM (3)	PC	1
800613B0400	POLYFOAM (4)	PC	1
81005220414	POLYBAG 5" X 22" X 0.04MM W/RE-CYCLING MARK {P/O MAT}	PC	1
83423080200	RUBBER WASHER OD=23, ID=8, T=2	PC	4
84005102011	RUBBER PAD (UL 94VO)	PC	4
84005102011	RUBBER PAD (UL 94VO)	PC	0
92989200100	LED HOLDER BKT FOR CIRCLE LED	PC	1
93988130200	POWER SWITCH ADAPTOR	PC	1
93993200200	TACT SWITCH ADAPTOR	PC	1
94888130200	DEGAUSSING COIL MTG. CLIP	PC	4
95488210000	AC LINE CORD CLIP	PC	1
95488280400	HIGH VOLTAGE CABLE SPACER	PC	2
00211402240	14" CRT #37SX110Y22-DC05A S/H CAI HONG	PC	1
00313137207	TUNER OSCAR 2900KKC 3X1 772 "TELEFUNKEN" (HIGH JACK)	PC	1
00855015105	DEGAUSSING COIL 40T (W/FIVE LAYERS OF TAPE)	PC	1
10773891600	SAW FILTER TSF-5316 SANYO	PC	1

**MODEL NO.: CT-M3425TXT Chassis type GT-613B****SYSTEM: PAL BG PLAYBACK AV IN / OUT CABLE TUNER**

Part Number	Description	Unit	Qty	
13013414801	SILICON DIODE IN4148	PC	1	
13310241131	I.C. ST24C01B1 SGS	PC	1	
13311525433	I.C. SAA5254P/T PHILIPS	PC	1	
16147100200	RCA JACK 3 PIN BLACK	JPJ1022-01-010 "HOSIDEN"	PC	1
16147300300	RCA JACK 3 PIN YELLOW	SC-8.4-6A "HONG YIP"	PC	1
16147320400	RCA JACK 3 PIN UIC-032-04AR	RED "UNITRONIC"	PC	1
16211001000	ANTENNA MATCHING TRANSFORME	(300 OHM TO 75 OHM)	PC	1
1662830234E	SPEAKER 2 X 3-1/2" 8 OHM 3W	DONGTAI	PC	2
17155008402	84" AC LINE CORD (END-CUT)SAA	APPW/7.5A PLUG.	PC	1
17272600099	BARE WIRE 54MM		M	0.3
17911050000	UL PVC TUBE 11MM DIA.		M	0.3
17940308000	SHRINKABLE TUBE		PC	0
18622750314	BATTERY 3A		PC	2
190613B10P6	FUNCTION P.C.B. W/AV IN	(230198)	PC	1
19140004207	4 PINS SOCKET ASS'Y AWG 20 420	MM	PC	1
51430041000	SELF-TAPPING SCREW 3 X 10 B/T	(HARDEN) {BLACK}	PC	1
610613A0139	GIFT BOX - TEAC DESIGN	{CT-M3425TXT}	PC	1
66323006298	SERIAL NO.LABEL - OC:GT-062/98		PC	2
6698813014K	RATING LABEL - TEAC (A) DESIGN	{CT-M3425TXT} {240V}	PC	1
670613B0060	INSTRUCTION MANUAL-TEAC DESIG	{CT-M3425TXT} {40 PROG.}	PC	1
678613B0109	EASY TUNE CARD (E1) - TEAC	DESIGN	PC	1
678613B0111	CB NO.LABEL (I)-TEAC {A}DESIGN	{CT-M3425TXT} {LARGE SIZE}	PC	2
678613B0504	SCREEN STICKER - TEAC DESIGN	{CT-M3425TXT}	PC	1
67893131503	TOTAL CARE LABEL - TEAC (A)	DESIGN	PC	1
69093293901	WARRANTY CARD -TEAC (B) DESIGN		PC	1
693613B0004	BAR CODE LABEL - 9313060009441		PC	1
703613B0107	SPK.GRILLE (LEFT) - METALLIC	GREY(8403C) DOUBLE SIDE W/SPY.	PC	1
703613B0207	SPK.GRILLE (RIGHT) - METALLIC	GREY(8403C) DOUBLE SIDE W/SPY.	PC	1
78272195210	DOUBLE ROD ANTENNA 5 SECTIONS	850MM "TIMPOLAR"	PC	1
81009150413	POLYBAG 9" X 15" X 0.04MM W/	RE-CYCLING P.E.MARK	PC	1
81030300461	POLYBAG 30"X30"X0.04MM W/PUNCH	TEAC DESIGN (CT-M341 TXT)	PC	1
82628160500	FOAM SHEET 28" X 16" X 0.5MM	THK.	PC	2
88488130400	21 PIN SOCKET COVER PLATE	BLACK	PC	1
88993130200	COVER PLATE (PAL)		PC	1
88993130400	COVER PLATE - W/O BAND SW. AND	TACT SW. HOLE	PC	1
900613B0112	FRONT CABINET (B) - METALLIC	GREY {8403C}	PC	1
902613A01U0	REAR CAB.-MOULDED BLK{UL}(FOR	HIGH TUNER JACK & BIG FLYBACK)	PC	1
917613B1102	FUNCTION LENS (B) -TEAC DESIGN	{CT-M3425TXT}	PC	1
977613B1100	FUNCTION KNOB - MOULDED BLACK	(AV VERSION)	PC	1
98693130106	NAME PLATE - TEAC DESIGN		PC	1
991613A0101	POWER KNOB-BLACK W/GREEN 3265	S.S. (PROCESSING FOR GT-613)	PC	1
00121419010	14" FLYBACK P.X'FORMER JF0501-	1903 "SHEKOU JEWEL" (BIG SIZE)	PC	1
01210233006	SEMI-FIXED RESISTOR EVND2AA	03B13 1KB	PC	2
01210234006	SEMI-FIXED RESISTOR EVND8AA	03B13 1KB	PC	2
01210334006	SEMI-FIXED RESISTOR EVND8AA	03B14 10KB	PC	2
01250233006	SEMI-FIXED RESISTOR EVND2AA	03B53 5KB	PC	3
01250234006	SEMI-FIXED RESISTOR EVND8AA	03B53 5KB	PC	1
01250334006	SEMI-FIXED RESISTOR EVND8AA	03B54 50KB	PC	1
10119100996	HORIZONTAL DRIVE TRANSFORMER	(R1009)	PC	1
10128882095	LINE FILTER 70MH		PC	1
10141402594	SWITCHING POWER TRANSFORMER	(HL4025B)	PC	1
10237060002	TANK COIL / AFC COIL COILS	707851	PC	1

**MODEL NO.: CT-M3425TXT Chassis type GT-613B****SYSTEM: PAL BG PLAYBACK AV IN / OUT CABLE TUNER**

Part Number	Description		Unit	Qty
10510010308	FIXED INDUCTOR COIL 10 UH	+ -10% AXIAL	PC	2
10510910308	FIXED INDUCTIVE COIL 1.0UH	+ -10% (WITTIS)	PC	3
10518110308	FIXED INDUCTOR COIL 180 UH	+ -10% AXIAL	PC	1
10520110602	CHOKE COIL 200UH 10% CH9012-	201K (ELEC PRODUCT)	PC	1
10539910308	FIXED INDUCTIVE COIL 3.9 UH	+ -10% (WITTIS)	PC	1
10547910308	FIXED INDUCTIVE COIL 4.7 UH		PC	5
10565005201	LINEARITY COIL 34UH FOR 21"	CRT	PC	1
10568910310	FIXED INDUCTIVE COIL 6.8UH	+ -10% AXIAL TYPE (FRUITRON)	PC	1
10710550066	SOUND TRAP CERAMIC FILTER	5.5MHZ WEI HAW	PC	1
10730550016	SOUND BYPASS CERAMIC FILTER	5.5MHZ WEI HAW	PC	1
11310010517	CARBON FILM RESISTOR 10 OHM	1/4W + -5%	PC	2
11310110517	CARBON FILM RESISTOR 100 OHM	1/4W + -5%	PC	11
11310110517	CARBON FILM RESISTOR 100 OHM	1/4W + -5%	PC	4
11310210517	CARBON FILM RESISTOR 1K OHM	1/4W + -5%	PC	10
11310210517	CARBON FILM RESISTOR 1K OHM	1/4W + -5%	PC	6
11310230575	METAL OXIDE FILM RESISTOR 1K	OHM 1W + -5%	PC	1
11310310167	METAL FILM RESISTOR 10K OHM	1/4W + -1%	PC	2
11310310517	CARBON FILM RESISTOR 10K OHM	1/4W + -5%	PC	10
11310310517	CARBON FILM RESISTOR 10K OHM	1/4W + -5%	PC	7
11310330575	METAL OXIDE FILM RESISTOR 10K	OHM 1W + -5%	PC	1
11310340575	METAL OXIDE FILM RESISTOR 10K	OHM 2W + -5%	PC	1
11310410517	CARBON FILM RESISTOR 100K OHM	1/4W + -5%	PC	6
11310420512	CARBON FILM RESISTOR 100K OHM	1/2W + -5%	PC	1
11310430575	METAL OXIDE FILM RESISTOR 100K	OHM 1W + -5%	PC	1
11310510517	CARBON FILM RESISTOR 1M OHM	1/4W + -5%	PC	1
11312030575	METAL OXIDE FILM RESISTOR 12	OHM 1W + -5%	PC	1
11312040575	METAL OXIDE FILM RESISTOR 12	OHM 2W + -5%	PC	1
11312110517	CARBON FILM RESISTOR 120 OHM	1/4W + -5%	PC	1
11312210517	CARBON FILM RESISTOR 1.2K OHM	1/4W + -5%	PC	5
11312310517	CARBON FILM RESISTOR 12K OHM	1/4W + -5%	PC	2
11312410517	CARBON FILM RESISTOR 120K OHM	1/4W + -5%	PC	1
11315110517	CARBON FILM RESISTOR 150 OHM	1/4W + -5%	PC	1
11315130575	METAL OXIDE FILM RESISTOR 150	OHM 1W + -5%	PC	1
11315210517	CARBON FILM RESISTOR 1.5K OHM	1/4W + -5%	PC	2
11315220512	CARBON FILM RESISTOR 1K5 OHM	1/2W + -5%	PC	4
11315310517	CARBON FILM RESISTOR 15K OHM	1/4W + -5%	PC	5
11315340575	METAL OXIDE FILM RESISTOR 15K	OHM 2W + -5%	PC	3
11318010517	CARBON FILM RESISTOR 18 OHM	1/4 + - 5%	PC	1
11318110517	CARBON FILM RESISTOR 180 OHM	1/4W + -5%	PC	1
11318210517	CARBON FILM RESISTOR 1.8K OHM	1/4W + -5%	PC	3
11318310517	CARBON FILM RESISTOR 18K OHM	1/4W + -5%	PC	2
11318410517	CARBON FILM RESISTOR 180K OHM	1/4W + -5%	PC	1
11318420512	CARBON FILM RESISTOR 180K OHM	1/2W + -5%	PC	1
11320210517	CARBON FILM RESISTOR 2K OHM	1/4W + -5%	PC	1
11322110517	CARBON FILM RESISTOR 220 OHM	1/4W + -5%	PC	3
11322130575	METAL OXIDE FILM RESISTOR 220	OHM 1W + -5%	PC	1
11322210517	CARBON FILM RESISTOR 2.2K OHM	1/4W + -5%	PC	3
11322220512	CARBON FILM RESISTOR 2.2K OHM	1/2W + -5%	PC	2
11322310167	METAL FILM RESISTOR 22K OHM	1/4W + -1%	PC	2
11322310517	CARBON FILM RESISTOR 22K OHM	1/4W + -5%	PC	12
11322310517	CARBON FILM RESISTOR 22K OHM	1/4W + -5%	PC	7
11322410517	CARBON FILM RESISTOR 220K OHM	1/4W + -5%	PC	3



**MODEL NO.: CT-M3425TXT Chassis type GT-613B**  
**SYSTEM: PAL BG PLAYBACK AV IN / OUT CABLE TUNER**

Part Number	Description		Unit	Qty
11322910517	CARBON FILM RESISTOR 2.2 OHM	1/4W +-5%	PC	1
11322920512	CARBON FILM RESISTOR 2.2 OHM	1/2W +-5%	PC	1
11322930575	METAL OXIDE FILM RESISTOR 2.2	OHM 1W +-5%	PC	1
11322940575	METAL OXIDE FILM RESISTOR 2.2	OHM 2W +-5%	PC	1
11327040575	METAL OXIDE FILM RESISTOR 27	OHM 2W +-5%	PC	1
11327210517	CARBON FILM RESISTOR 2.7K OHM	1/4W +-5%	PC	5
11327220512	CARBON FILM RESISTOR 2.7K OHM	1/2W +-5%	PC	2
11327310517	CARBON FILM RESISTOR 27K OHM	1/4W +-5%	PC	3
11333110517	CARBON FILM RESISTOR 330 OHM	1/4W +-5%	PC	1
11333210167	METAL FILM RESISTOR 3.3K OHM	1/4W +-1%	PC	1
11333210217	CARBON FILM RESISTOR 3.3K OHM	1/4W +-2%	PC	1
11333210517	CARBON FILM RESISTOR 3.3K OHM	1/4W +-5%	PC	5
11333260575	METAL OXIDE FILM RESISTOR 3K3	OHM 5W +-5%	PC	1
11333310517	CARBON FILM RESISTOR 33K OHM	1/4W +-5%	PC	2
11333430575	METAL OXIDE FILM RESISTOR 330K	OHM 1W +-5%	PC	1
11333840575	METAL OXIDE FILM RESISTOR 0.33	OHM 2W +-5%	PC	1
11333910517	CARBON FILM RESISTOR 3.3 OHM	1/4W +- 5%	PC	2
11333940542	NON-FLAMMABLE FUSE RESISTOR	3.3 OHM 2W +-5%	PC	1
11333940575	METAL OXIDE FILM RESISTOR 3.3	OHM 2W +-5%	PC	1
11339060575	METAL OXIDE FILM RESISTOR 39	OHM 5W +-5%	PC	1
11339110517	CARBON FILM RESISTOR 390 OHM	1/4W +-5%	PC	4
11339130575	METAL OXIDE FILM RESISTOR 390	1W +-5%	PC	1
11339210517	CARBON FILM RESISTOR 3.9K OHM	1/4W +-5%	PC	1
11347010517	CARBON FILM RESISTOR 47 OHM	1/4W +-5%	PC	3
11347020512	CARBON FILM RESISTOR 47 OHM	1/2W +-5%	PC	1
11347040575	METAL OXIDE FILM RESISTOR 47	OHM 2W +-5%	PC	1
11347110517	CARBON FILM RESISTOR 470 OHM	1/4W +-5%	PC	1
11347210517	CARBON FILM RESISTOR 4.7K OHM	1/4W +-5%	PC	8
11347310517	CARBON FILM RESISTOR 47K OHM	1/4W +-5%	PC	5
11347960551	WIRE WOUND CEMENT RES. 4.7 OHM	5W +-5%	PC	1
11356010517	CARBON FILM RESISTOR 56 OHM	1/4W +-5%	PC	2
11356110517	CARBON FILM RESISTOR 560 OHM	1/4W +-5%	PC	5
11356210517	CARBON FILM RESISTOR 5.6K OHM	1/4W +-5%	PC	3
11356521092	CARBON COMPOSITION RESISTOR	5.6M OHM 1/2W +-10%	PC	4
11368110517	CARBON FILM RESISTOR 680 OHM	1/4W +-5%	PC	1
11368210217	CARBON FILM RESISTOR 6.8K OHM	1/4W +-2%	PC	1
11368210517	CARBON FILM RESISTOR 6.8K OHM	1/4W +-5%	PC	6
11368310167	METAL FILM RESISTOR 68K OHM	1/4W +-1%	PC	1
11368820542	FUSING RESISTOR 0.68 OHM 1/2W	+5%	PC	1
11368830542	FUSING RESISTOR 0.68 OHM 1W	+5%	PC	3
11368840542	FUSEBLE RESISTOR 0.68 2W +-5%		PC	1
11375010517	CARBON FILM RESISTOR 75 OHM	1/4W +-5%	PC	5
11382010517	CARBON FILM RESISTOR 82 OHM	1/4W +-5%	PC	1
11382110517	CARBON FILM RESISTOR 820 OHM	1/4W +-5%	PC	1
11382210517	CARBON FILM RESISTOR 8.2K OHM	1/4W +-5%	PC	4
11382310517	CARBON FILM RESISTOR 82K OHM	1/4W +-5%	PC	1
11382410517	CARBON FILM RESISTOR 820K OHM	1/4W +-5%	PC	2
11421020001	THERMISTOR (NICHICON ZPB53 BL	200C)	PC	1
12310034093	CERAMIC CAP. 10 PF 50V +-5%	(NPO)	PC	1
12310135060	CERAMIC CAP. 100 PF 50V +-10%	(SL TYPE) "SMART GOOD"	PC	5
12310235090	CERAMIC CAP. 0.001 MFD 50V	+10% (B TYPE)	PC	8
12310285010	CERAMIC CAP. 0.001 MFD 2KV	+10% MATSUSHITA	PC	1

**MODEL NO.: CT-M3425TXT Chassis type GT-613B****SYSTEM: PAL BG PLAYBACK AV IN / OUT CABLE TUNER**

Part Number	Description		Unit	Qty
12310337090	CERAMIC CAP. 0.01 MFD 50V +80	-20%	PC	5
12310427090	CERAMIC CAP. 0.1 MFD 25V +80	-20%	PC	11
12310427090	CERAMIC CAP. 0.1 MFD 25V +80	-20%	PC	10
12310427090	CERAMIC CAP. 0.1 MFD 25V +80	-20%	PC	9
12312285010	CERAMIC CAP. 0.0012 2KV +-10%		PC	1
12313034093	CERAMIC CAP. 13PF 50V +-5%	(NPO)	PC	1
12315034093	CERAMIC CAP. 15 PF 50V +-5%	(NPO)	PC	2
12318285010	CERAMIC CAP. 0.0018 MFD 2KV	+10% MATSUSHITA	PC	1
12322135060	CERAMIC CAP. 220 PF 50V +-10%	(SL TYPE)	PC	3
12322155190	CERAMIC CAP. 220 PF 500V	+10% MATSUSHITA	PC	1
12322235090	CERAMIC CAP. 0.0022 MFD 50V	+10% (B TYPE)	PC	1
12322246650	CERAMIC CAP. 0.0022 MFD 400VAC	+20% ECKDNA222ME "MATSUSHITA	PC	2
12322285010	CERAMIC CAP. 0.0022 MFD 2KV	+10% MATSUSHITA	PC	3
12322337090	CERAMIC CAP. 0.022 MFD 50V +80	-20%	PC	8
12327034093	CERAMIC CAP. 27PF 50V +-5%	(NPO)	PC	2
12333135060	CERAMIC CAP. 330 PF 50V +-10%	(SL TYPE)	PC	1
12347034093	CERAMIC CAP. 47 PF 50V +-5%	(NPO)	PC	1
12347135060	CERAMIC CAP. 470 PF 50V +-10%	(SL TYPE)	PC	2
12347255090	CERAMIC CAP. 0.0047 MFD 500V	+10% (B TYPE)	PC	3
12347255290	CERAMIC CAP. 0.0047 MFD 500V	+10% (B TYPE) SMALL SIZE	PC	3
12368135090	CERAMIC CAP. 680 PF 50V +-10%	(B TYPE)	PC	1
12382185010	CERAMIC CAP. 820 PF 2KV +-10%	(SL TYPE) MATSUSHITA	PC	1
12610407101	MYLAR CAP. 0.1 MFD 50V +-10%		PC	4
12610410131	POLYPROPYLENE CAP. 0.1 MFD	100V +-10%	PC	1
12622207101	MYLAR CAP. 0.0022 MFD 50V	+10%	PC	4
12622307101	MYLAR CAP. 0.022 MFD 50V +-10%		PC	2
12622407101	MYLAR CAP 0.22 MFD 50V +-10%		PC	4
12633216141	METALIZED POLYPROPYLENE CAP.	0.0033 MFD 1600V +-10%	PC	1
12633307101	MYLAR CAP. 0.033 MFD 50V +-10%		PC	1
12639207101	MYLAR CAP. 0.0039 MFD 50V	+10%	PC	3
12647207101	MYLAR CAP. 0.0047 MFD 50V	+10%	PC	5
12647307101	MYLAR CAP. 0.047 MFD 50V +-10%		PC	2
12647320131	POLYPROPYLENE CAP. 0.047 MFD	200V +-10%	PC	2
12647322241	METALIZED POLYPROPYLENE CAP.	0.047 MFD 275V +-20% "OKAYA"	PC	2
12647407101	MYLAR CAP. 0.47 MFD 50V +-10%		PC	1
12647420131	POLYPROPYLENE CAP 0.47 MFD	200V +-10%	PC	1
12710507105	ELECT CAP. 1 MFD 50V +-10%	(TIME CONSTANT)	PC	1
12710507203	ELECT. CAP. 1 MFD 50V +-20%		PC	10
12710513203	ELECT. CAP. 1 MFD 160V	+20%	PC	1
12710604203	ELECT. CAP. 10 MFD 16V +-20%		PC	10
12710610403	ELECT CAP. 10 MFD 100V +-20%	105øC	PC	1
12710704203	ELECT. CAP. 100 MFD 16V +-20%		PC	6
12710706203	ELECT. CAP. 100 MFD 35V +-20%		PC	1
12710713203	ELECT. CAP. 100 MFD 160V +-20%	"NICHICON"	PC	1
12710740203	ELECT. CAP. 100 MFD 400V +-20%		PC	1
12710805203	ELECT. CAP. 1000 MFD 25V +-20%		PC	2
12722504223	ELECT. CAP. BIPOLAR 2.2MFD 16V	+20%	PC	7
12722507203	ELECT. CAP 2.2 MFD 50V +-20%		PC	5
12722604203	ELECT. CAP. 22 MFD 16V +-20%		PC	2
12722704203	ELECT. CAP. 220 MFD 16V +-20%		PC	2
12722706203	ELECT. CAP. 220 MFD 35V +-20%		PC	2
12722805203	ELECT. CAP. 2200 MFD 25V +-20%		PC	1

**MODEL NO.: CT-M3425TXT Chassis type GT-613B**  
**SYSTEM: PAL BG PLAYBACK AV IN / OUT CABLE TUNER**

Part Number	Description		Unit	Qty
12733507203	ELECT CAP. 3.3 MFD 50V +-20%		PC	1
12733613203	ELECT CAP. 33 MFD 160V +-20%		PC	1
12733625203	ELECT CAP. 33 MFD 250V +-20%		PC	1
12733805203	ELECT. CAP. 3300 MFD 25V +-20%		PC	1
12747505203	ELECT. CAP. 4.7 MFD 25V +-20%		PC	1
12747604203	ELECT. CAP. 47 MFD 16V +-20%		PC	7
12747607207	ELECT. CAP. 47 MFD 50V +-20%	NICHICON	PC	1
12747609403	ELECT CAP. 47 MFD 63V +-20%	105øC	PC	1
12747609407	ELECT CAP. 47 MFD 63V +-20%	105øC "NICHICON"	PC	1
12747705203	ELECT. CAP. 470 MFD 25V +-20%		PC	1
12747706203	ELECT CAP. 470 MFD 35V +-20%		PC	3
13013014600	SILICON DIODE 1SS146 ROHM		PC	3
13013017660	SILICON DIODE 1SS176FA TOSHIBA		PC	1
13013414801	SILICON DIODE IN4148		PC	12
13013414801	SILICON DIODE IN4148		PC	11
13013414801	SILICON DIODE IN4148		PC	2
13031001250	DIODE BAX12A		PC	1
13031003350	DIODE BYD33D		PC	4
13031006250	DIODE BAW 62		PC	6
13031009550	DIODE BYW95B		PC	1
13031013350	DIODE BYD33J		PC	4
13031144164	BRIDGE RECTIFIER 1J4B41	TOSHIBA	PC	1
13041003901	ZENER DIODE 3.9V		PC	1
13041005101	ZENER DIODE 5.1V 1/2W +-5%		PC	1
13041007501	ZENER DIODE 7.5V 1/2W		PC	1
13041008201	ZENER DIODE 8.2V		PC	1
13041012002	ZENER DIODE 12V HZ12A2		PC	1
13041020040	ZENER DIODE 20V		PC	1
13041057400	ZENER DIODE UPC 574J NEC		PC	1
13041109101	ZENER DIODE 9.1V		PC	1
13051204400	LED 3MM RED 204HDC		PC	1
13111140203	TRANSISTOR ED1402C		PC	12
13111160203	TRANSISTOR ED1602C (PHILIPS)		PC	4
13117054702	TRANSISTOR BC547B PHILIPS		PC	2
13117054802	TRANSISTOR BC 548B PHILIPS.		PC	3
13117055702	TRANSISTOR BC 557B PHILIPS		PC	1
13117055802	TRANSISTOR BC 558B PHILIPS		PC	1
13119037000	TRANSISTOR BF 370 PHILIPS.		PC	1
13119042200	TRANSISTOR BF422 PHILIPS		PC	3
13120250862	TRANSISTOR BU 2508 DF PHILIPS		PC	1
13123248200	TRANSISTOR 2SC2482 TOSHIBA		PC	2
13124249813	TRANSISTOR 2SD2498(M) TOSHIBA		PC	1
13126540100	TRANSISTOR 2N 5401 PHILIPS		PC	1
13126555100	TRANSISTOR 2N 5551 PHILIPS		PC	1
13137013500	TRANSISTOR BD 135 PHILIPS		PC	1
13146236900	TRANSISTOR PH2369 PHILIPS		PC	1
13148001100	TRANSISTOR BUT 11 PHILIPS		PC	1
13310322133	IC CTV322SV2.0/PCA84C641P/068	PHILIPS	PC	1
13310466533	I.C. TDA4665 (PHILIPS IC)		PC	1
13312836133	I.C. TDA8361/N5 PHILIPS		PC	1
13320101333	I.C. TDA1013B PHILIPS		PC	2
13320365333	I.C. TDA3653B PHILIPS		PC	1

**MODEL NO.: CT-M3425TXT Chassis type GT-613B****SYSTEM: PAL BG PLAYBACK AV IN / OUT CABLE TUNER**

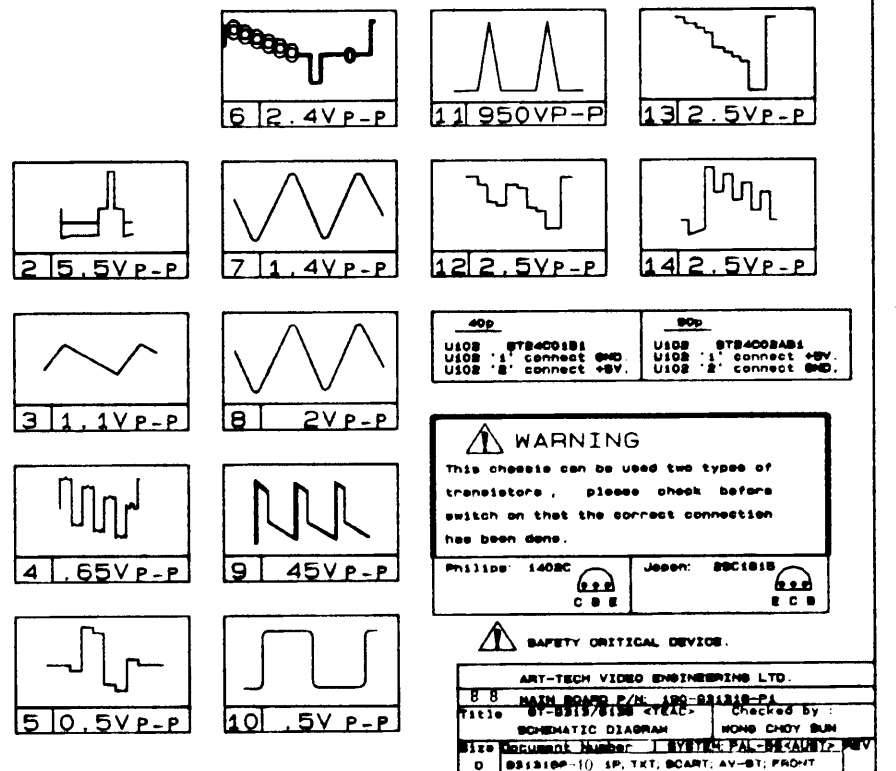
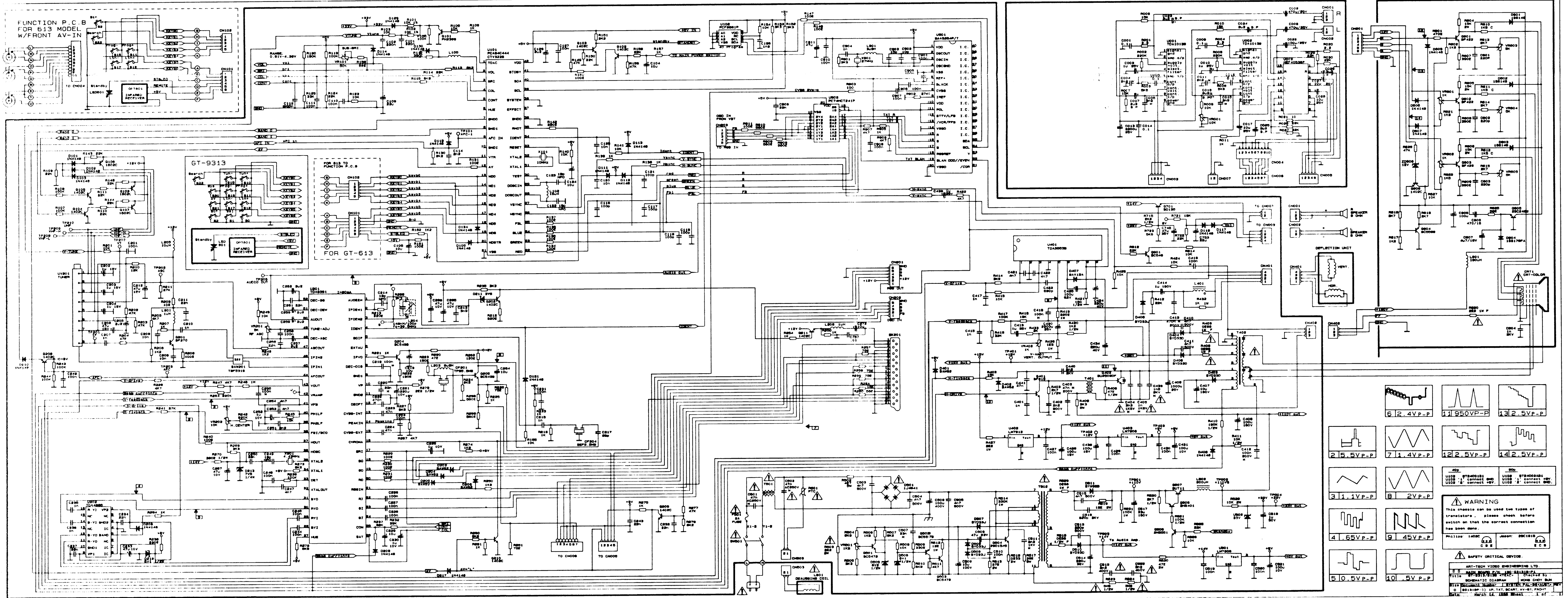
Part Number	Description	Unit	Qty
13320780531	I.C. L7805CV SGS	PC	1
13320780831	IC L7808C-V SGS-THOMSON	PC	1
13320781231	IC L7812CV SGS-THOMSON	PC	1
13330424133	I.C. 74HCT241N PHILIPS	PC	1
13340405333	I.C. HEF4053BP PHILIPS	PC	1
13650000100	REMOTE RECEIVER (KODENSHI HC-SZ01)	PC	1
13710000031	CRYSTAL 10 MHZ HOORAY	PC	1
13727000033	CRYSTAL 27 MHZ 16PF "GIC"	PC	1
13744361921	CRYSTAL 4.433619 MHZ HC-49U 16PF "GIC"	PC	1
14610000614	POWER SWITCH PS5E-B "CHINA LANDMARK"	PC	1
14610411500	TACT SWITCH 5 PIN L=9.5MM UIC-115C "UNITRONIC"	PC	6
16010100108	PIN CONNECTOR 1 PIN PLUG STRAIGHT	PC	3
16010225527	PIN CONNECTOR 2 PINS PLUG STRAIGHT (UL) (S.H.S)	PC	2
16010280508	PIN CONNECTOR 2 PIN PLUG STRAIGHT	PC	1
16010325527	PIN CONNECTOR 3 PINS PLUG	PC	1
16010425527	PIN CONNECTOR 4 PINS PLUG (SHS)	PC	1
16010480508	PIN CONNECTOR 4 PIN PLUG STRAIGHT	PC	1
16010525527	PIN CONNECTOR 5 PINS WAFER 2.5 PITCH	PC	2
16010625527	PIN CONNECTOR 6 PINS WAFER (SHS) S11-W	PC	2
16010725527	PIN CONNECTOR 7 PIN PLUG	PC	1
16011025527	PIN CONNECTOR 10 PINS PLUG	PC	1
16154010500	CRT SOCKET ISL-01 IN CHANG	PC	1
16168370222	21 PIN SOCKET	PC	1
17262000540	UL 1007 TOP COAT WIRE AWG 20 50MM BLACK 5 X 5MM	PC	1
17262001040	UL 1007 TOP COAT WIRE AWG 20 100MM BLACK 10 X 10 MM	PC	1
17262001240	UL 1007 TOP COAT WIRE AWG 20 120MM BLACK 10 X 10 MM	PC	1
17262002040	UL 1007 TOP COAT WIRE AWG 20 200MM BLACK 10 X 10 MM	PC	1
17262003640	UL 1007 TOP COAT WIRE AWG 20 360MM BLACK 10 X 10MM	PC	1
17262600840	UL 1007 TOP COAT WIRE AWG 26 80MM BLACK 10 X 10 MM	PC	3
17262600840	UL 1007 TOP COAT WIRE AWG 26 80MM BLACK 10 X 10 MM	PC	0
17262601440	UL 1007 TOP COAT WIRE AWG 26 140MM BLACK 10 X 10 MM	PC	2
17262601842	UL 1007 TOP COAT WIRE AWG 26 180MM RED 10 X 10 MM	PC	3
17262602240	UL 1007 TOP COAT WIRE AWG 26 220MM BLACK 10 X 10 MM	PC	1
17262602642	UL 1007 TOP COAT WIRE AWG 26 260MM RED	PC	2
17262603042	UL 1007 TOP COAT WIRE AWG 26 300MM RED	PC	1
17262603643	UL 1007 TOP COAT WIRE AWG 26 360MM ORANGE 10 X 10MM	PC	2
17262603644	UL 1007 TOP COAT WIRE AWG 26 360MM YELLOW 10 X 10MM	PC	1
17272600099	BARE WIRE 54MM	M	5
17272600099	BARE WIRE 54MM	M	0
17272600099	BARE WIRE 54MM	M	0
17272600099	BARE WIRE 54MM	M	0
17283008099	FLAT BRIDED WIRE 1200MM	M	0.8
17363302250	SINGLE SHIELD WIRE L=220MM	PC	1
17765526305	5 PIN FLAT CABLE WIRE	PC	1
17765526305	5 PIN FLAT CABLE WIRE	PC	0
17765526305	5 PIN FLAT CABLE WIRE	PC	0
17900101000	OIL SLEEVING 1 mm DIA.	M	0.2
17900101000	OIL SLEEVING 1 mm DIA.	M	0
17900102000	OIL SLEEVING 2MM DIA.	PC	0.1
17910500000	UL PVC TUBE 5mm DIA	M	0.2
17910502600	UL PVC TUBE 5 mm	PC	0.8
17910730000	UL PVC TUBE 7.3MM DIA.	PC	0.2

**MODEL NO.: CT-M3425TXT Chassis type GT-613B**  
**SYSTEM: PAL BG PLAYBACK AV IN / OUT CABLE TUNER**

Part Number	Description	Unit	Qty	
17911050000	UL PVC TUBE 11MM DIA.	M	0.1	
17940303000	3MM DIA. SHRINKABLE TUBE	PC	0	
17940503000	5 mm DIA SHRINKABLE TUBE	M.	0.2	
17940503000	5 mm DIA SHRINKABLE TUBE	M.	0	
18222200003	FUSE T2A 250V	PC	1	
190613B00P9	AV-STEREO + CCD P.C.B.(230198)	PC	1	
190931302P0	CRT P.C.B. (170496)	PC	1	
190931316P1	MAIN P.C.B. (281197)	PC	1	
19101100707	10 PIN L=440MM (P1-3, P4-6 #26	DOUBLE SHIELD WIRE, UL1185)	PC	1
19101100707	10 PIN L=440MM (P1-3, P4-6 #26	DOUBLE SHIELD WIRE, UL1185)	PC	0
19101100707	10 PIN L=440MM (P1-3, P4-6 #26	DOUBLE SHIELD WIRE, UL1185)	PC	0
19110003409	1 PIN SOCKET ASSM'Y L=220MM		PC	1
19110101607	1 PIN DOUBLE INSOLATION WIRE	AWG 18 L=340MM BLUE	PC	1
19110101707	1 PIN DOUBLE INSOLATION WIRE	AWG 18 L=340MM BROWN	PC	1
19120004409	2 PIN SOCKET ASSM'Y L=440MM		PC	1
19120100307	2 PIN SOCKET ASS'Y L=240MM		PC	1
19130101007	3 PIN SOCKET ASSM'Y (2 WIRE)	L=440MM	PC	1
19140102407	4 PIN SOCKET ASS'Y L=240MM	#26 UL1007 2.5MM PITCH	PC	1
19150101407	5 PIN SOCKET ASS'Y L=240MM		PC	1
19150101407	5 PIN SOCKET ASS'Y L=240MM		PC	0
19150102307	5 PIN SOCKET ASS'Y L=200MM	#24 UL1007 2.5MM PITCH	PC	1
19150102307	5 PIN SOCKET ASS'Y L=200MM	#24 UL1007 2.5MM PITCH	PC	0
19160003609	6 PIN SOCKET ASS'Y UL 1007 AWG	26 360MM	PC	1
19160101107	6 PIN SOCKET ASS'Y L=240MM		PC	1
19160101107	6 PIN SOCKET ASS'Y L=240MM		PC	0
19170100707	7 PIN L=200MM (P1-3 #26 UL1007	P4-5,P6-7 SHIELD CABLE UL1185)	PC	1
19170100707	7 PIN L=200MM (P1-3 #26 UL1007	P4-5,P6-7 SHIELD CABLE UL1185)	PC	0
19170100707	7 PIN L=200MM (P1-3 #26 UL1007	P4-5,P6-7 SHIELD CABLE UL1185)	PC	0
50430500610	MACHINE SCREW 3 X 6 B/M	(WHITE)	PC	5
50430501210	MACHINE SCREW 3 X 12 B/M		PC	1
51730331210	SELF-TAPPING SCREW 3 X 12 W/A	W/H=7MM (HARDEN)	PC	2
52030502555	NUT M3 T=2.5 OD=5.5		PC	1
54002003001	EYELET 2 X 3 MM		PC	12
54002003001	EYELET 2 X 3 MM		PC	0
54002504001	BRASS EYELET 2.5X4MM		PC	2
58010100400	STAND OFF TWIST TIE #ST-3		PC	1
58010126101	CABLE TIE L=100MM		PC	26
58010126101	CABLE TIE L=100MM		PC	0
58010126101	CABLE TIE L=100MM		PC	0
62288280200	FELT L240 X W17 X T0.5MM	W/TAPE	PC	4
63011551200	FIBRE WASHER 11 X 5.5 X 1.2 mm		PC	4
63193200100	FIBER (FOR SHIELD PLATE)	(SAMSUNG TUNER)	PC	1
74488130100	SPRING FOR C.R.T. MOUNTING 5.2	X 42 X 0.6MM	PC	1
74606310100	TEST PIN:TOTAL LENGTH 18.6mm	THK:0.8mm	PC	3
74606310101	AC LINE CORD PIN		PC	4
75006310100	SOLDERING LUG LEG:8X4MM		PC	3
76668680100	FUSE HOLDER		PC	2
779613A0100	IRON HEAT SINK		PC	2
77988200101	IRON HEAT SINK (D)		PC	2
77995280101	IRON HEAT SINK		PC	1
78188200102	ALUMINIUM HEAT SINK (B)		PC	1
78188210203	ALUMIMIUM HEAT SINK (A)	®®-OUT DATE-	PC	1

**MODEL NO.: CT-M3425TXT Chassis type GT-613B**  
**SYSTEM: PAL BG PLAYBACK AV IN / OUT CABLE TUNER**

Part Number	Description	Unit	Qty
78194210500	HEAT SINK (C) ASS'Y	PC	1
78393130402	SHIELD CAN	PC	1
78393130504	SHIELD CAN COVER	PC	1
78393200200	SHIELD PLATE (SAMSUNG TUNER)	PC	1
84001102421	PAD CORD L240 X W10 X T1 MM W/TAPE	PC	4
93888200100	SECAM BOARD HOLDER	PC	4



**WARNING**  
 This chassis can be used two types of transistors. Please check before switch on that the correct connection has been done.

U402: 878400181  
 U403: 878400181  
 U404: 878400181

U402: 1: connect +5V  
 U402: 2: connect +5V  
 U403: 1: connect +5V  
 U403: 2: connect +5V

U404: 1: connect +5V  
 U404: 2: connect +5V

Model: 613  
 Date: 1982.12.15

CT-713625T